

CUSTOM MODULAR HOMES

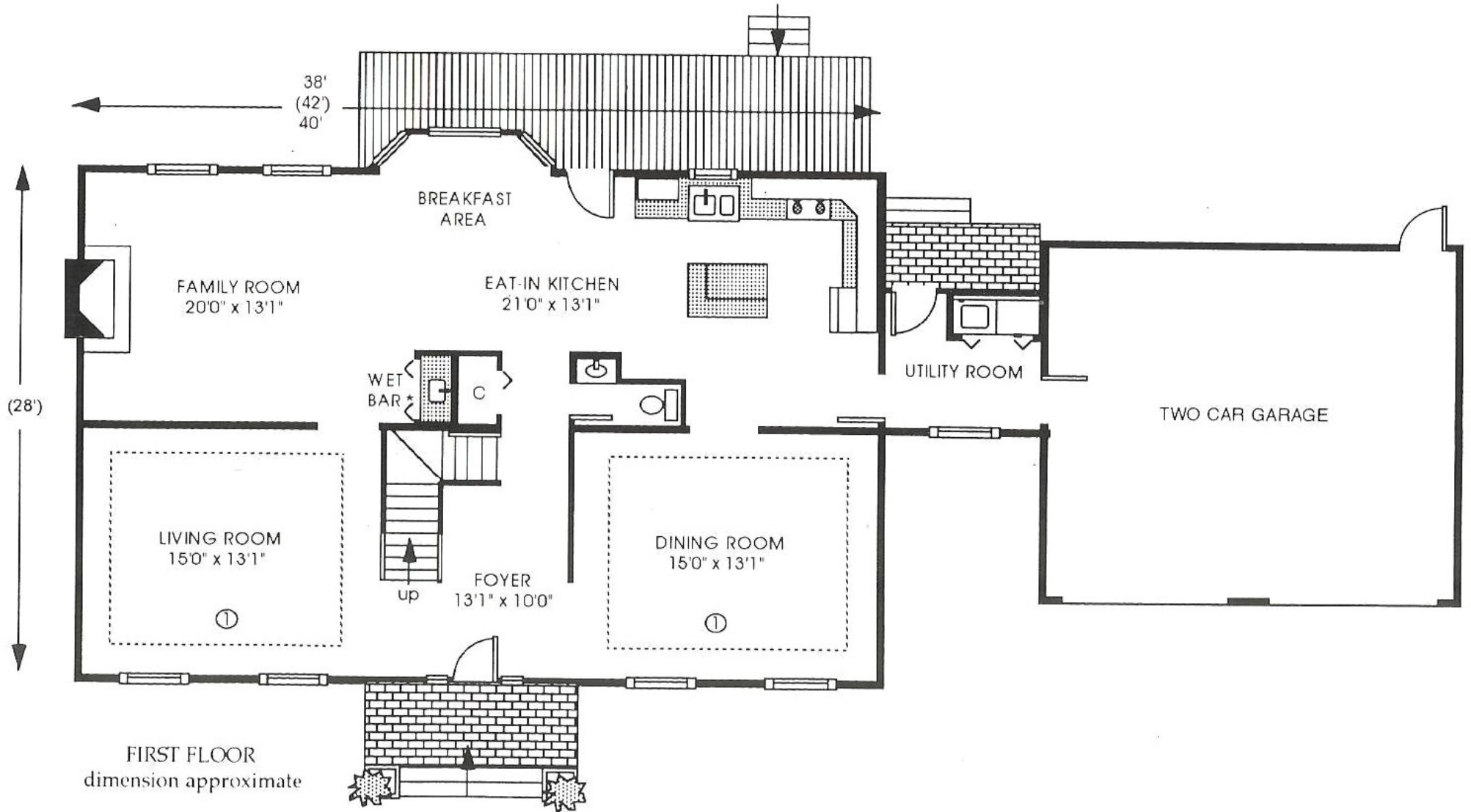
881 Main St., Winchester, MA 01890
Phone (781)729-5844 - Fax(781)210-3444



THE DOVER

A UNIQUE COLONIAL WITH OPEN FLOOR PLAN CONCEPT

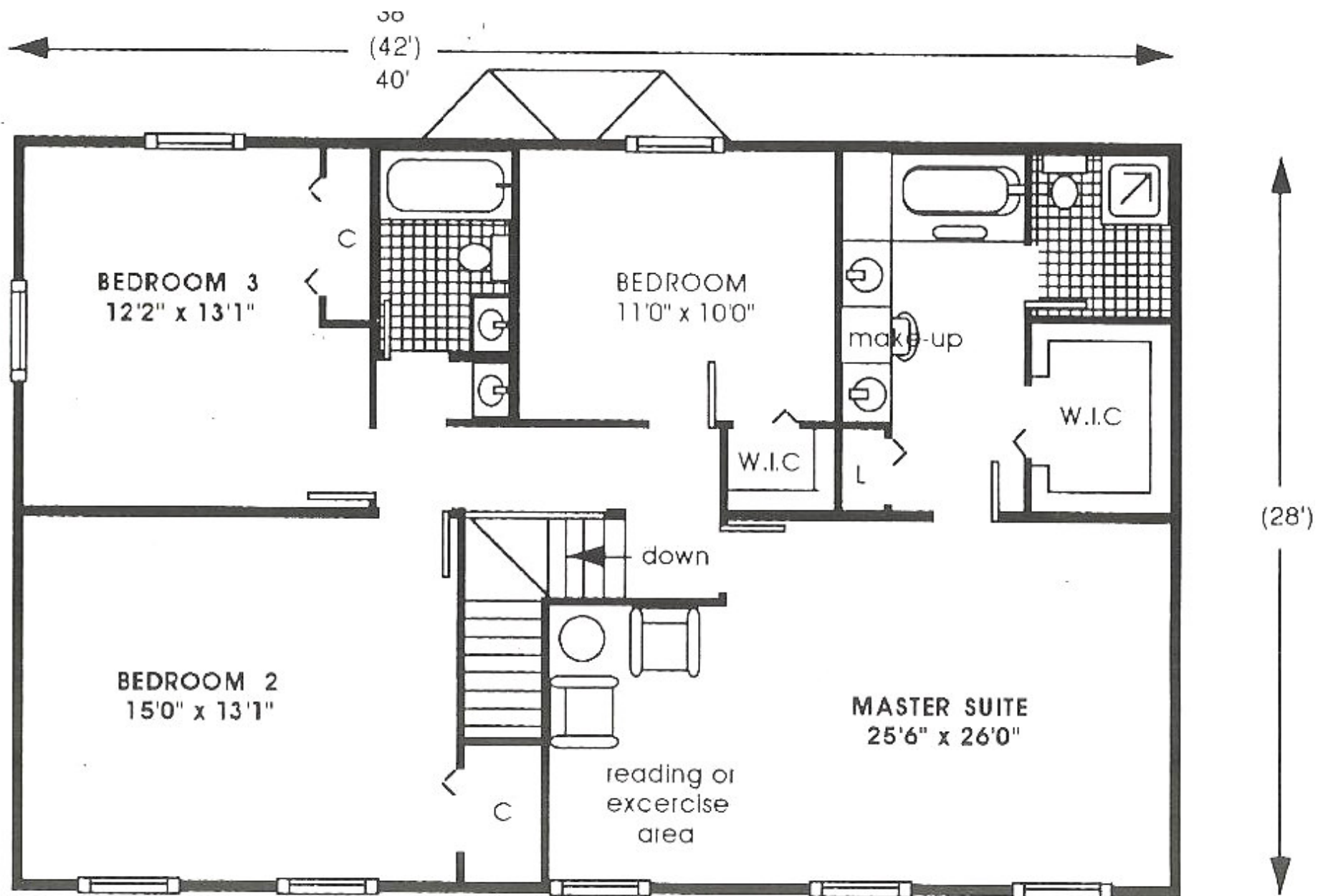
SHOWN WITH OPTIONS – 2,260 S.F



THE DOVER

DELUXE PACKAGE : WOOD TRIMMED CEILINGS IN LIVING & DINING ROOMS, FIREPLACE, W.O.B. ISLAND WITH BARTOP & WET BAR ARE OPTIONALS

A Truly Unique Home With Open Floor Plan Concept shown with options - Area 2,000 to 2,500 s.f.



SECOND FLOOR - A -
 WITH LUXURIOUS MASTER SUITE

